



# ZNF785 Polyclonal Antibody

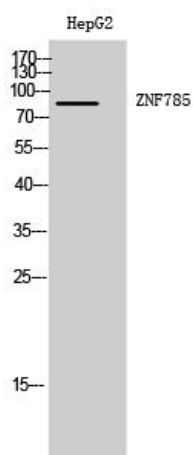
<b>Catalog No</b>	YP-Ab-02205
<b>Isotype</b>	IgG
<b>Reactivity</b>	Human;Rat;Mouse;
<b>Applications</b>	WB;IHC;IF;ELISA
<b>Gene Name</b>	ZNF785
<b>Protein Name</b>	Zinc finger protein 785
<b>Immunogen</b>	The antiserum was produced against synthesized peptide derived from human ZNF785. AA range:91-140
<b>Specificity</b>	ZNF785 Polyclonal Antibody detects endogenous levels of ZNF785 protein.
<b>Formulation</b>	Liquid in PBS containing 50% glycerol, 0.5% BSA and 0.02% sodium azide.
<b>Source</b>	Polyclonal, Rabbit,IgG
<b>Purification</b>	The antibody was affinity-purified from rabbit antiserum by affinity-chromatography using epitope-specific immunogen.
<b>Dilution</b>	WB: 1/500 - 1/2000. IHC: 1/100 - 1/300. ELISA: 1/40000.. IF 1:50-200
<b>Concentration</b>	1 mg/ml
<b>Purity</b>	≥90%
<b>Storage Stability</b>	-20°C/1 year
<b>Synonyms</b>	ZNF785; Zinc finger protein 785
<b>Observed Band</b>	87kD
<b>Cell Pathway</b>	Nucleus .
<b>Tissue Specificity</b>	B-cell,Brain,Peripheral blood monocyte,Testis,
<b>Function</b>	function:May be involved in transcriptional regulation.,sequence caution:The predicted gene has been split into 2 genes: ZNF688 and ZNF785.,similarity:Belongs to the krueppel C2H2-type zinc-finger protein family.,similarity:Contains 1 KRAB domain.,similarity:Contains 2 C2H2-type zinc fingers.,similarity:Contains 7 C2H2-type zinc fingers.,
<b>Background</b>	function:May be involved in transcriptional regulation.,sequence caution:The predicted gene has been split into 2 genes: ZNF688 and ZNF785.,similarity:Belongs to the krueppel C2H2-type zinc-finger protein family.,similarity:Contains 1 KRAB domain.,similarity:Contains 2 C2H2-type zinc fingers.,similarity:Contains 7 C2H2-type zinc fingers.,
<b>matters needing attention</b>	Avoid repeated freezing and thawing!



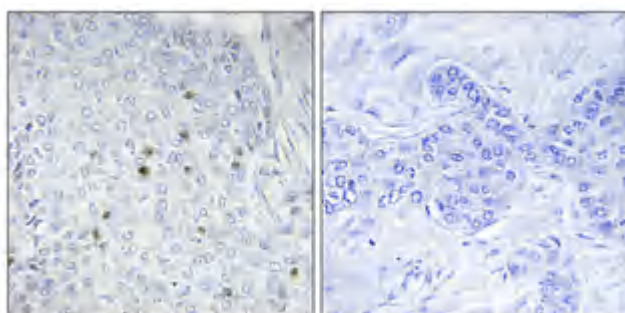
### Usage suggestions

This product can be used in immunological reaction related experiments. For more information, please consult technical personnel.

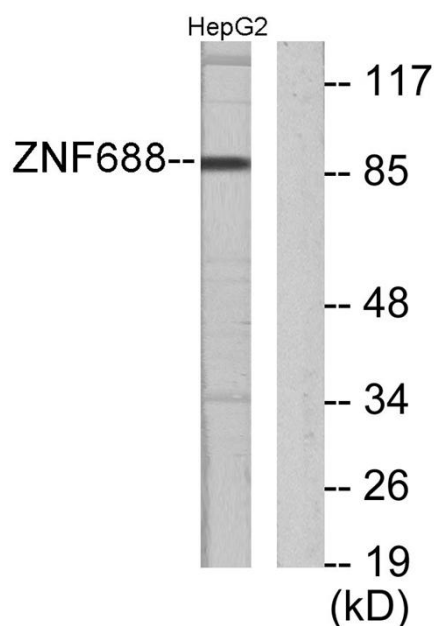
## Products Images



Western Blot analysis of HepG2 cells using ZNF785 Polyclonal Antibody. Secondary antibody(catalog#:RS0002) was diluted at 1:20000 cells nucleus extracted by Minute TM Cytoplasmic and Nuclear Fractionation kit (SC-003,Inventbiotech,MN,USA).



Immunohistochemical analysis of paraffin-embedded Human breast cancer. Antibody was diluted at 1:100(4° overnight). High-pressure and temperature Tris-EDTA,pH8.0 was used for antigen retrieval. Negative contrl (right) obtaned from antibody was pre-absorbed by immunogen peptide.



Western blot analysis of lysates from HepG2 cells, using ZNF785 Antibody. The lane on the right is blocked with the synthesized peptide.